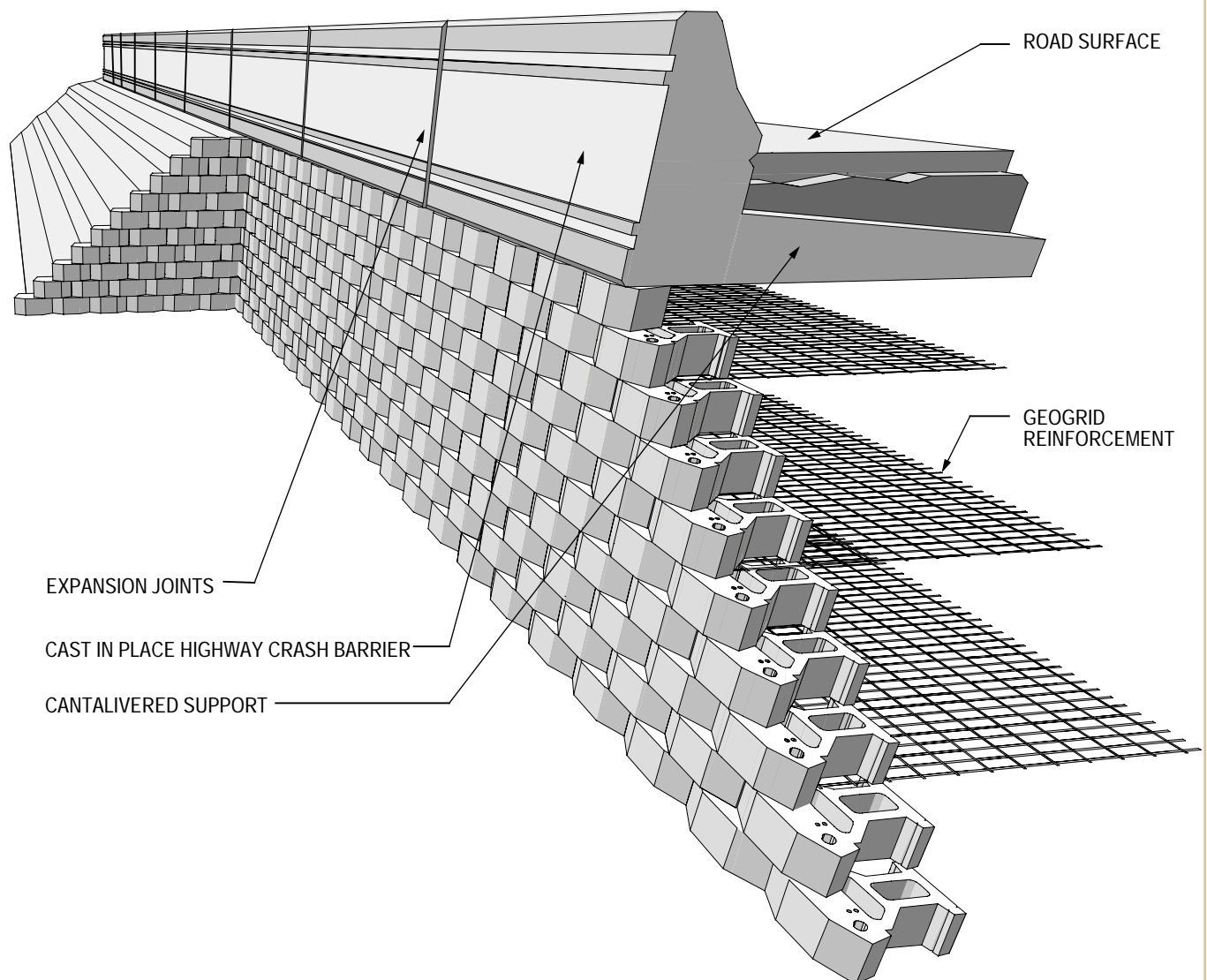


## TOP OF WALL FINISHES

### ► TRAFFIC BARRIER

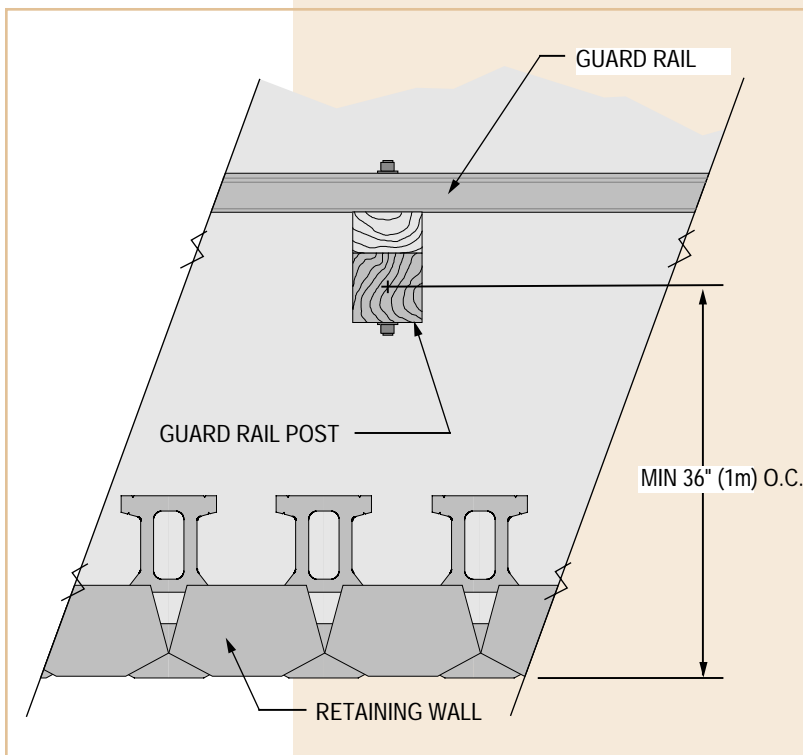
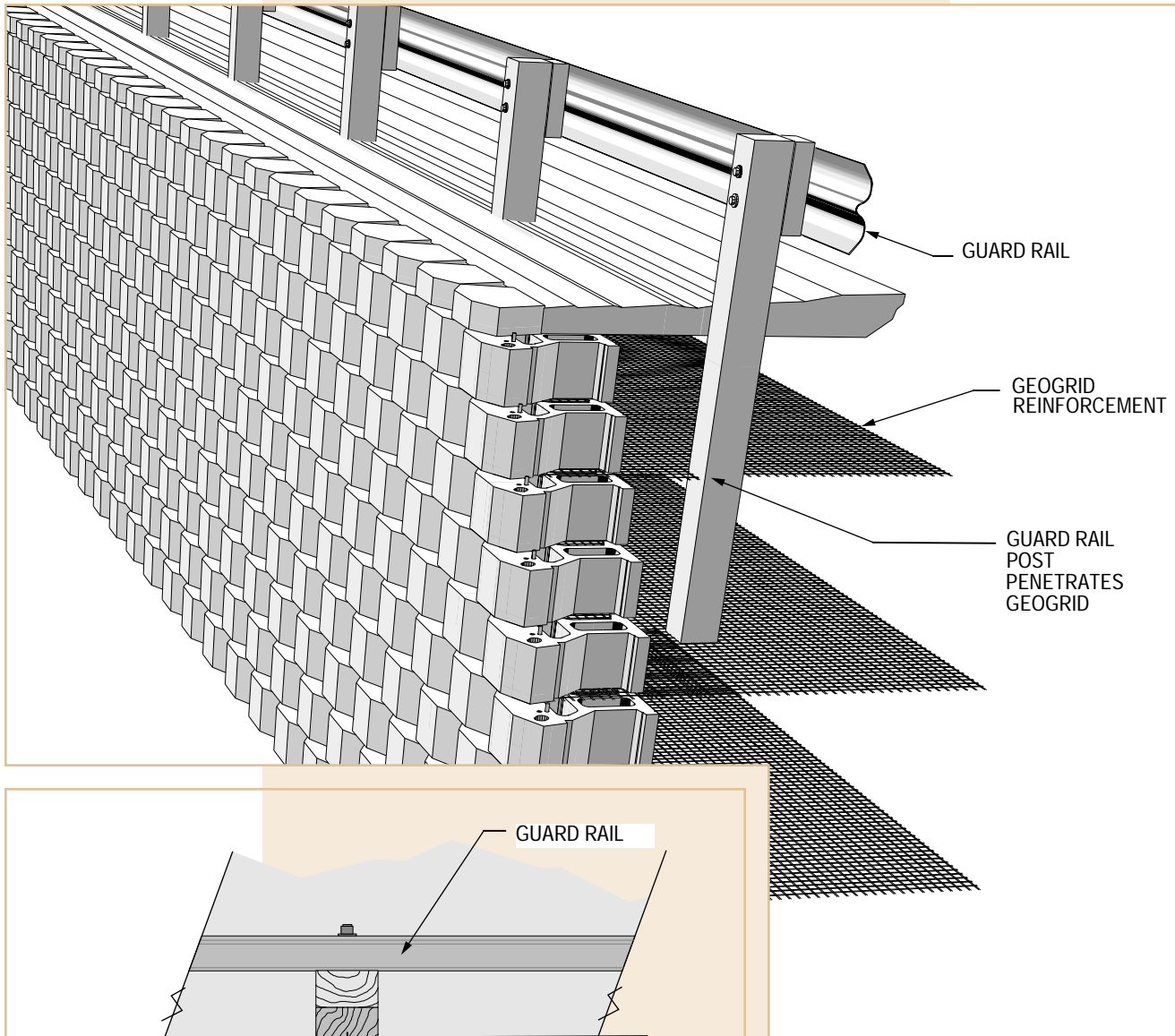
Keystone® walls can readily be capped with a reinforced traffic barrier. Follow these procedures to install a poured concrete coping.

1. Install the Keystone® wall per general installation instructions.
2. Set and secure forming materials along the top course of the Keystone® wall using standard forming procedures. If the design requires an overhanging coping, form the edge using a "L" shaped galvanized iron or plastic forming material. Fasten this material to the top courses of the Keystone® wall. Pour and finish traffic barrier as by engineered design. Insert control joints at a maximum nine feet on center along the length of the coping, or as specified by engineer.



TOP OF WALL FINISHES

► GUARD RAILS



Guard rails can easily be placed along the top of a Keystone® wall using standard procedures. Posts may be of wood or steel sections. Post positions should be a minimum of 36" (0.9m) behind the wall face to provide anchoring of post into the reinforced soil area. If the wall is reinforced with geogrid, the guard rail post may be placed by cutting holes in the geogrid layers as needed per the recommendations of the geogrid manufacturer. Typically, the project engineer will provide design recommendations for this detail.