

SPEC- THERMAL™

INSULATED MASONRY

A Family of Pre-Insulated Masonry Wall Systems, offering design flexibility and cost-effective high performance.

Capable of meeting IECC R-Value or U-Factor Thresholds in all Climate Zones

Options for both Full and Partial Grout Reinforcement Designs.

Wall Systems Provide the Enhanced Moisture Protection of a Barrier Wall

Available in a Wide Variety of Colors and Finishes - Including Half High Blended Colors for Brick Aesthetics.

Meets Code Requirements - Continuous Insulation is Not Required due to U-Factor Compliance Method.



Wide Variety of Textures and Colors

Korfil Hi-R® Korfil Hi-R H Spec-Brik® Hi-R



Korfil Hi-R H



SPEC-BRIK® Hi-R



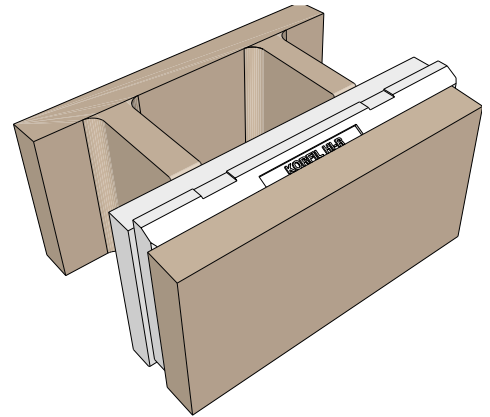
Korfil Hi-R®

High Performance Pre-Insulated Masonry Walls

The *Hi-R* and *Hi-R H* product lines offer superior thermal performance while delivering the many aesthetic, durability and resilience benefits of concrete masonry. With these systems, the insulation inserts are placed as integral insulation during manufacturing to provide a wall system with predictable and consistent thermal properties while protecting the insulation from damage by placing it within the double-exposed masonry surfaces.

Korfil Hi-R®

Korfil Hi-R® is a proven solution for the construction of energy efficient structures with a track record of several decades of successful performance. The insulation inserts and reduced web profiles provide Hi-R with significant advantages over conventional masonry, while offering the durability, simplicity and aesthetic appeal of double exposed masonry. Korfil Hi-R provides designers with the flexibility to meet demanding energy Codes with proven performance.



KORFIL HI-R (8" High) Masonry Units (Grouted)						
Type of Block (inches)	Density of Block (pcf)					
	85	95	105	115	125	135
8x8x16						
R _t Value	10.98	10.00	9.07	8.18	7.36	6.59
U Factor	0.09	0.10	0.11	0.12	0.14	0.15
Heat Capacity	11.10	11.60	12.00	12.40	12.90	13.30
Equivalent Thickness	5.60	5.60	5.60	5.60	5.60	5.60
10x8x16						
R _t Value	12.85	11.82	10.82	9.85	8.94	8.08
U Factor	0.08	0.08	0.09	0.10	0.11	0.12
Heat Capacity	15.20	15.80	16.30	16.90	17.50	18.00
Equivalent Thickness	7.60	7.60	7.60	7.60	7.60	7.60
12x8x16						
R _t Value	13.63	12.58	11.56	10.57	9.62	8.72
U Factor	0.07	0.08	0.08	0.09	0.10	0.11
Heat Capacity	19.50	20.10	20.80	21.50	22.10	22.80
Equivalent Thickness	9.60	9.60	9.60	9.60	9.60	9.60

**Please visit www.concreteproductsgroup.com
for design and construction resources including
CAD details, design and construction videos, and
structural design guidance**

Nationwide Availability

The Concrete Products Group LLC (CPG) consists of regional market leaders in the concrete products industry. The CPG is organized to provide consistent, top-quality products to regional and national customers.

800-789-0872

A-1 BLOCK
1617 South Division Avenue
Orlando, FL 32805

A. JANDRIS & SONS
202 High St.
Gardner, MA 01440

ALLIED CONCRETE PRODUCTS LLC
3900 Shannon St.
Chesapeake, VA 23323-1054

AMCON BLOCK
P.O. Box 546
2211 Hwy 10 South
St. Cloud, MN 56302-0546

BARNES & CONE
P.O. Box 280
5894 Court St. Rd.
Syracuse, NY 13206-0280

BASALITE CONCRETE PRODUCTS LLC
605 Industrial Way
Dixon, CA 95620

BLOCK USA
P.O. Box 100813
2570 Ruffner Rd.
Birmingham, AL 35210

FIZZANO BROTHERS CONCRETE PRODUCTS, INC.
1776 Chester Pike
Crum Lynne, PA
19022-1299

HEADWATERS CONSTRUCTION MATERIALS
7620 Washington Ave.
Houston, TX
77007

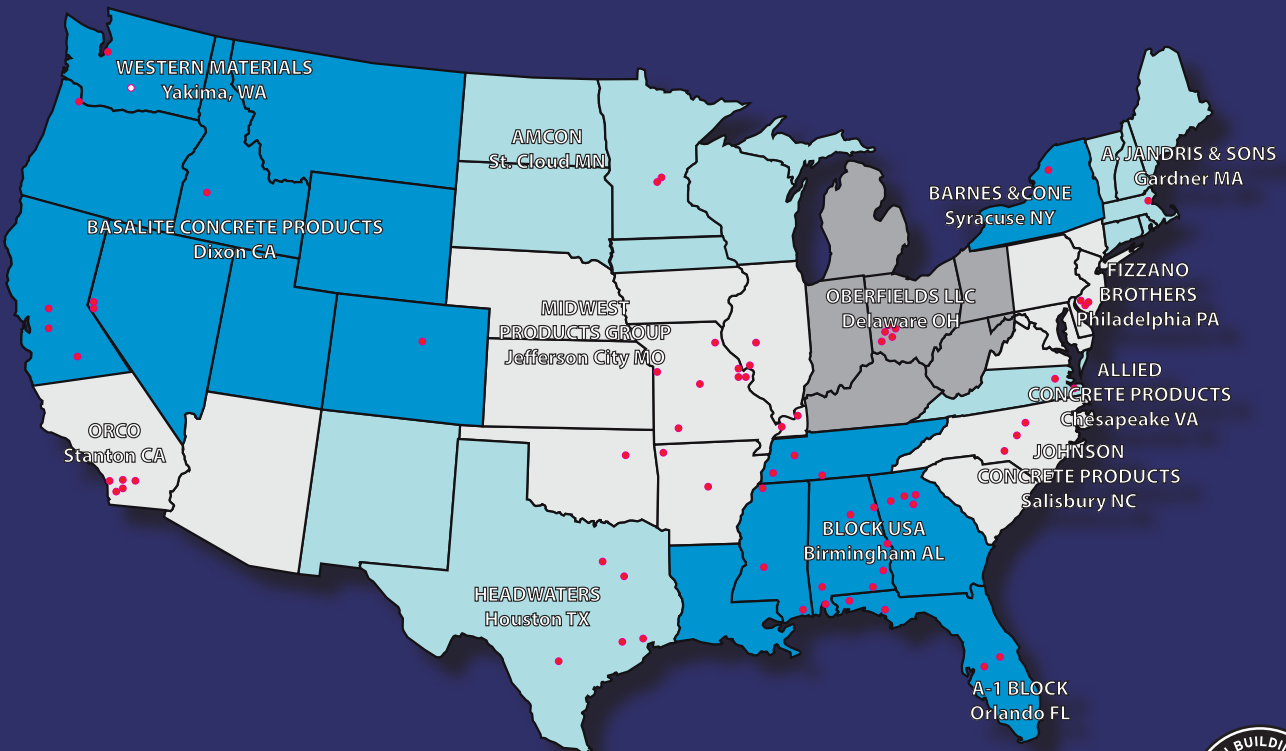
JOHNSON CONCRETE COMPANY
217 Klumac Road
Salisbury, NC 28144

MIDWEST PRODUCTS GROUP
12901 St. Charles Rock Rd.
Bridgeton, MO
63044-2485

OBERFIELDS, LLC
P.O. Box 362
528 London Rd.
Delaware, OH 43015

ORCO BLOCK CO., INC.
11100 Beach Blvd.
Stanton, CA
90680-0129

WESTERN MATERIALS COMPANY
1202 South First Street
Yakima, WA 98901



Manufacturing Locations



CONCRETE PRODUCTS GROUP

INNOVATIVE CONCRETE MASONRY SYSTEMS

www.concreteproductsgroup.com